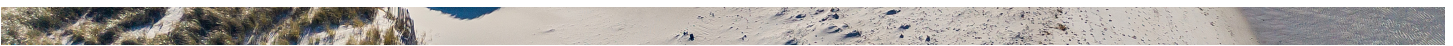




## Panoramic Ocean Views in Dennis



### 94 Horsefoot Path, Dennis, MA

Price	\$ 6,995,000
Rooms:	Five
Bedrooms:	Four
Bathrooms:	Four Full, One Half
Living Area:	2,566 square feet
Assessment:	\$ 4,467,100 / 2025
Acres:	1.19 Acres
Year Built:	2013
Heating:	Forced Air / Gas
Cooling:	Central AC
Water:	Town
Sewer:	Private
Taxes:	\$ 19,343 / 2025



LUXURY  
COLLECTION™

**BERKSHIRE  
HATHAWAY**  
HOMESERVICES

ROBERT PAUL  
PROPERTIES

Perched along the pristine shores of Cape Cod Bay, this exceptional Dennis beachfront residence offers a rare opportunity to own 110 feet of private sandy beach with sweeping panoramic views of the bay. Designed for effortless coastal living, this four-bedroom, four-and-one-half-bath contemporary captures the essence of seaside luxury—from sun-drenched interiors to expansive waterfront decks perfect for entertaining or quiet reflection by the sea. Custom-built by the current owners with no expense spared, this home showcases unobstructed bay views from every ocean-facing room. Upon entering, you're greeted by a spacious great room with sliders that draw the eye immediately to the sparkling water beyond. Comfortable seating, a sleek built-in gas fireplace, and a wall-mounted media center create a warm and inviting focal point for gatherings. The great room flows seamlessly into a spectacular chef's kitchen appointed with top-of-the-line appliances, a generous center island, and spacious and open dining area—all oriented toward the breathtaking waterfront backdrop. The first-floor primary suite provides a private sanctuary with its spa-like bath and sliders to an ocean-view deck, creating a serene retreat with an intimate connection to the outdoors. Upstairs, the upper level hosts three light-filled en suite bedrooms with spectacular water vistas and refined coastal finishes. The generous oceanside deck extends the living space outward, inviting effortless gatherings with multiple seating and dining areas perfectly positioned to take in the ever-changing light and gentle rhythm of the bay. A private seasonal boardwalk leads directly from the deck to one of Cape Cod's most beautiful stretches of beach, perfect for morning walks and unforgettable sunsets. Additional highlights include a built-in Sonos sound system throughout, a media room on the lower level, an attached garage, and beautiful curb appeal enhanced by a covered front porch and manicured coastal landscaping. With its strong rental history, modern amenities, and unparalleled beachfront setting, this property presents a rare opportunity to experience the very best of Cape Cod oceanfront living—as a summer retreat, investment property, or year-round coastal haven.





The information contained herein has been obtained through sources deemed reliable but cannot be guaranteed as to its accuracy. Buyers are encouraged to do their own due diligence through independent verification.

Exclusively Represented by

Robert B. Kinlin

RKinlin@robertpaul.com - 508.648.2739

www.RobertPaul.com

Berkshire Hathaway HomeServices Robert Paul Properties

©2025 BHH Affiliates, LLC. An independently operated subsidiary of HomeServices of America, Inc., a Berkshire Hathaway affiliate, and a franchisee of BHH Affiliates, LLC. Berkshire Hathaway HomeServices and the Berkshire Hathaway HomeServices symbol are registered service marks of Columbia Insurance Company, a Berkshire Hathaway affiliate. Equal Housing Opportunity.

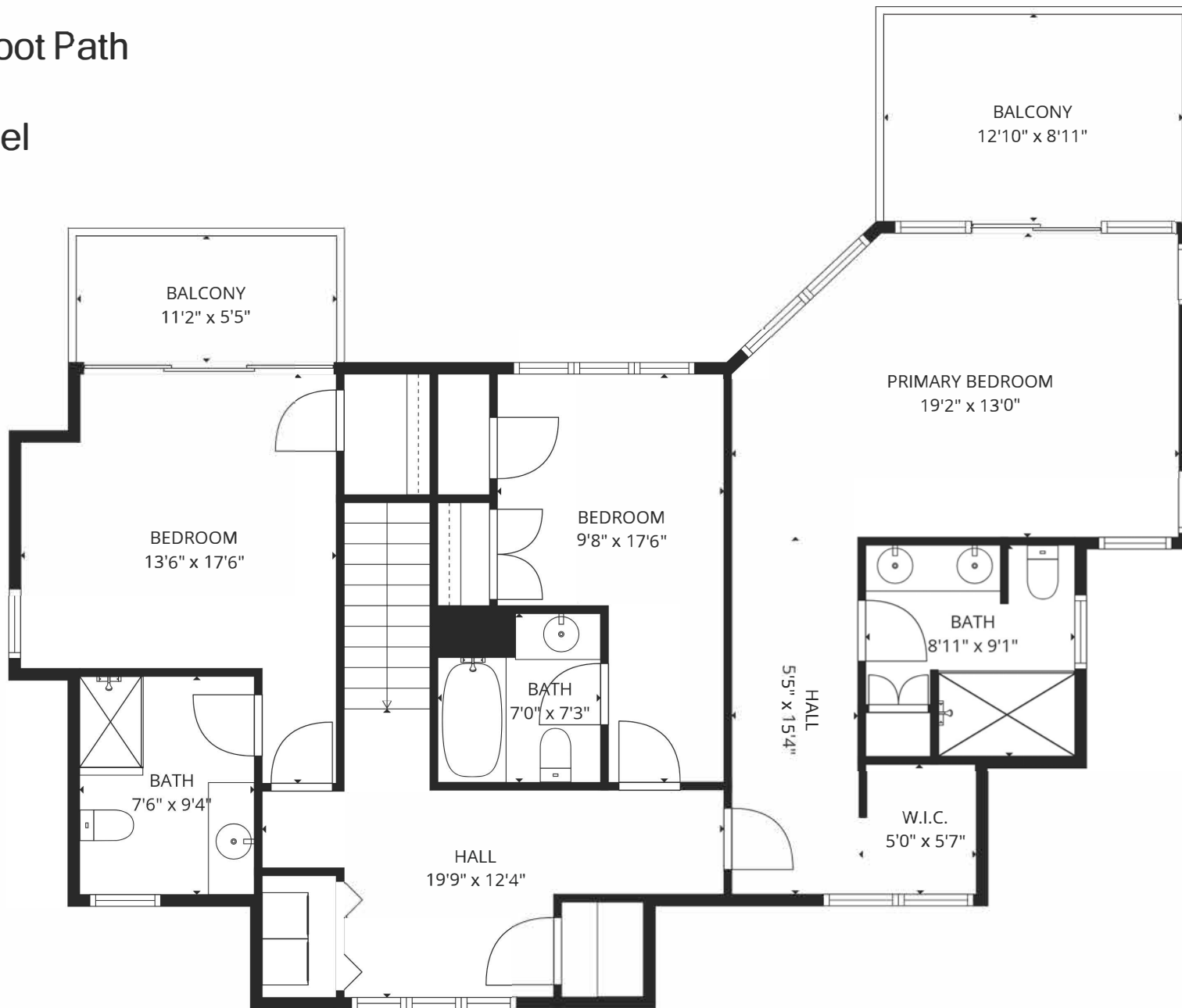
94 Horsefoot Path  
Dennis  
Main Level



**TOTAL: 2566 sq. ft**

1st floor: 215 sq. ft, 2nd floor: 1202 sq. ft, 3rd floor: 1149 sq. ft EXCLUDED  
AREAS: GARAGE: 477 sq. ft, PORCH: 192 sq. ft, DECK: 576 sq. ft, BALCONY:  
175 sq. ft, WALLS: 230 sq. ft

94 Horsefoot Path  
Dennis  
Upper Level

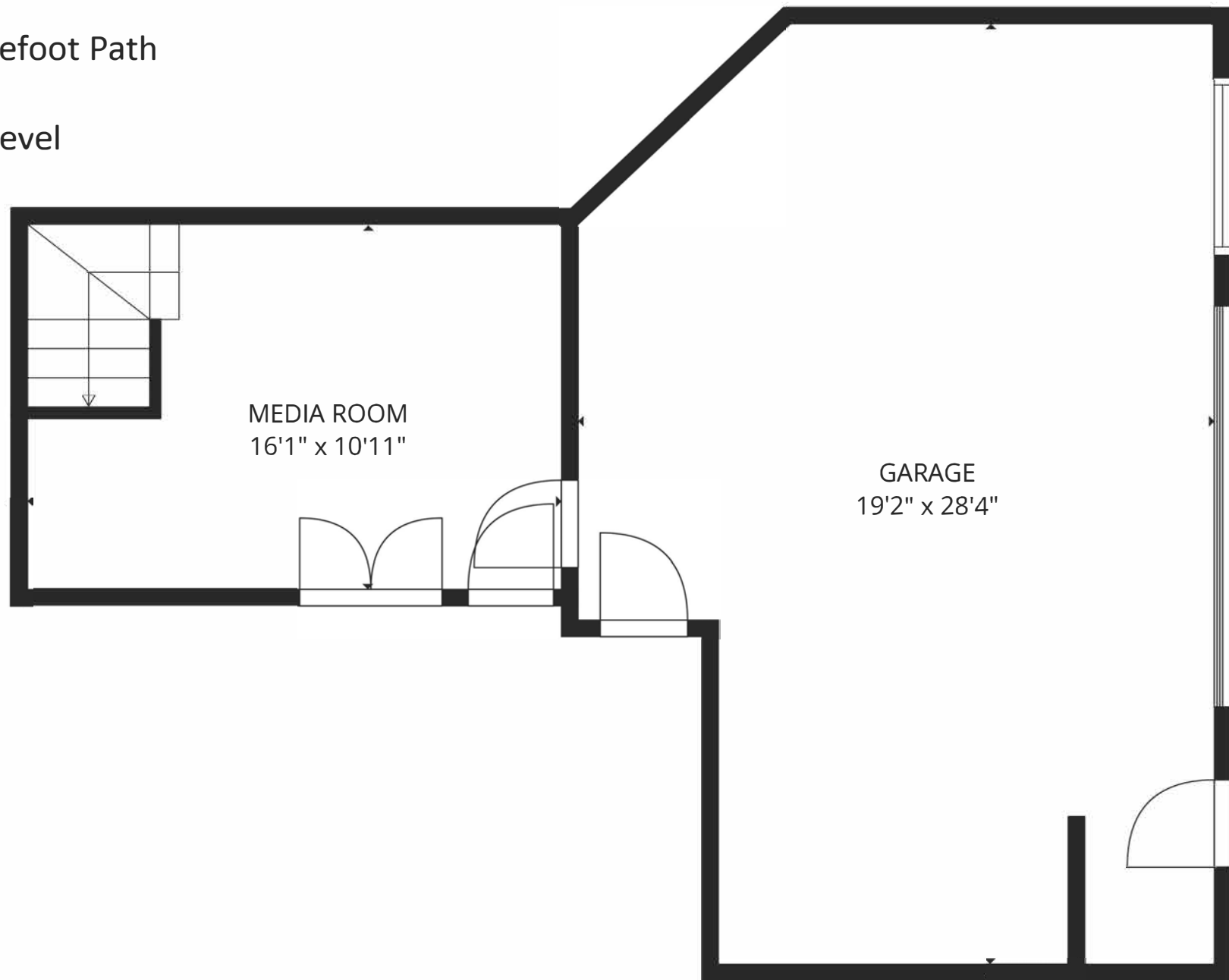


**TOTAL: 2566 sq. ft**

1st floor: 215 sq. ft, 2nd floor: 1202 sq. ft, 3rd floor: 1149 sq. ft EXCLUDED  
AREAS: GARAGE: 477 sq. ft, PORCH: 192 sq. ft, DECK: 576 sq. ft, BALCONY:  
175 sq. ft, WALLS: 230 sq. ft



94 Horsefoot Path  
Dennis  
Lower Level



**TOTAL: 2566 sq. ft**

1st floor: 215 sq. ft, 2nd floor: 1202 sq. ft, 3rd floor: 1149 sq. ft EXCLUDED  
AREAS: GARAGE: 477 sq. ft, PORCH: 192 sq. ft, DECK: 576 sq. ft, BALCONY:  
175 sq. ft, WALLS: 230 sq. ft



- 2025 - Basemap - MassDC
- 2025 - Basemap - MassDC
- 2025 - Basemap - MassDC
- 2025 - Basemap - MassDC
- 2025 - Basemap - MassDC
- Places of Interest - Facilities
- Fire Station
- Police Station
- Town Hall
- COA
- Public Library
- School
- Ice Rink
- 2025 - Places of Interest -
- Beach
- Beach (Fresh Water)
- Beach (Way To Water)
- Landmark
- Golf
- Museum
- Recreation
- 2025 - Basemap - MassDC
- 1-DENNIS
- 2-DENNIS
- 3-DENNIS
- 4-DENNIS
- 1-NEIGHBOR
- 2-NEIGHBOR
- 3-NEIGHBOR
- 4-NEIGHBOR
- 2025 - Basemap - Neighb
- Open Water
- Barrier Beach - Open
- 2025 - Basemap - Neighb
- 2025 - Basemap - Open W
- Tidal Flat
- Rocky Intertidal Sho
- Open Water

MAYFLOWER BEACH

HORSEFOOT PATH BEACH

DUNES ROAD

HORSEFOOT PATH

UNCLE JOHNS WAY

WADES WAY

COOLIDGE WAY

O K AVENUE

DIGO ROAD

The data shown on this site are provided for informational and planning purposes only. The Town and its consultants are not responsible for the misuse or misrepresentation of the data.

0 200 400 ft

Printed on 11/04/2025 at 03:04 PM

Town of Dennis, MA